



# *Builder & Designer* *Product Guide*



**Puretec**<sup>®</sup>  
PERFECTING WATER



# Tapware

Designer taps to add a SPARQ to every kitchen

## SPARQ S SERIES

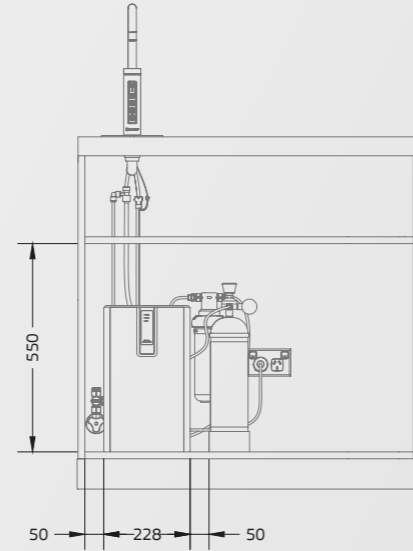
### SPARQ S6

CHILLED, SPARKLING, BOILING



An essential for every kitchen

A simple touch on the LED panel gives you filtered sparkling, boiling and chilled water, all from a stylish faucet. Ideal for entertaining, it's a must-have for any modern kitchen. The S6 allows you to select the boiling water temperature between 80 & 100°C, with chilled water served down to 2°C.



### SPARQ S5

CHILLED, SPARKLING, AMBIENT



Perfect for outdoor entertaining or a home bar

The SPARQ S5 is an ideal addition to an outdoor kitchen or a home bar area. This tap produces instant chilled, sparkling and ambient (room temperature) water all filtered through a Puretec Z1-R filter cartridge.

## TRIPLA ELITE SERIES

3-WAY MIXER TAPS

Made from 100% stainless steel, the Tripla ELITE Series is available in two stylish designs and five colours to suit all kitchen colour palettes. A high quality 3-Way Mixer tap backed up with a 15 year warranty.



**Tripla ELITE-10**  
Goose Neck



**Tripla ELITE-20**  
Straight Neck

### What is a 3-Way Mixer Tap?

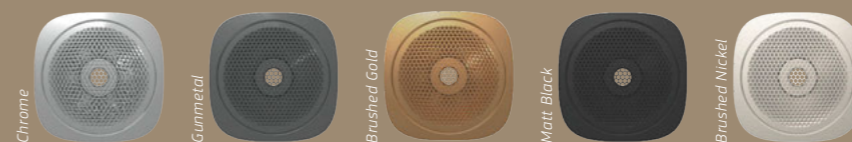
Having a 3-way mixer tap allows the hot and cold line to remain separate from the filtered water, eliminating need for a dedicated filter tap and ensuring the flow rate of the cold water service is not impacted by the filter.

Pair a Tripla ELITE tap with a Puretec filter kit, Z1-MW-K, a 5.5 Lpm, 0.1 micron filter that removes chlorine, sediment & bacteria including E. coli & Giardia.



### Taps Available in Five Colours:

SPARQ Drip Trays pictured, sold separately to SPARQ Units.



Scan the QR code for more information





# Mains Water Filtration

Semi-recessed, in-wall, whole house water filtration

The FilterWall-IM2 is an Australian first, semi-recessed, whole house filtration system that combines style and function with an industry leading mains water filtration system. The lockable cabinet has been designed to protect the filter from the harsh Australian weather while providing a stylish finish. A must have for any new-build home.



## AVAILABLE IN FOUR COLOURS



Night Sky®

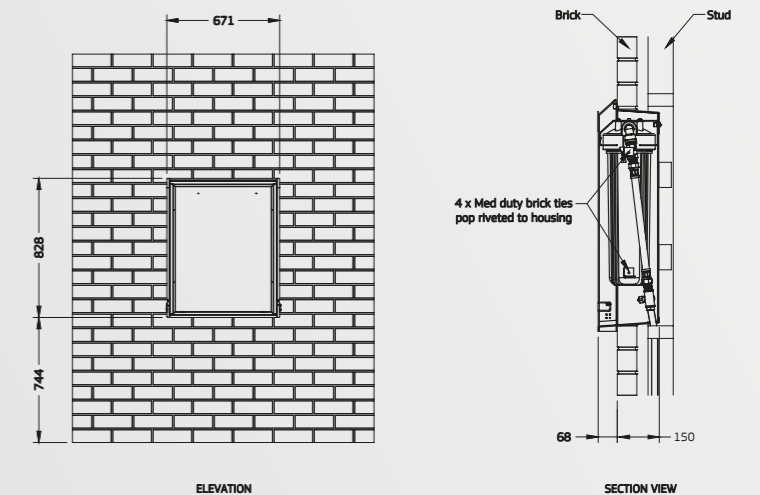
Monument®

Windspray®

Surfmist®

## INSTALLATION DRAWINGS & REVIT FILES

Click the below QR Code to download Revit files and Dimension & Installation drawings for all popular wall types.



Scan the QR code to download the design tools





# Mains Water Filtration

Providing clean, great tasting water to every tap in your home



## WH2 SERIES

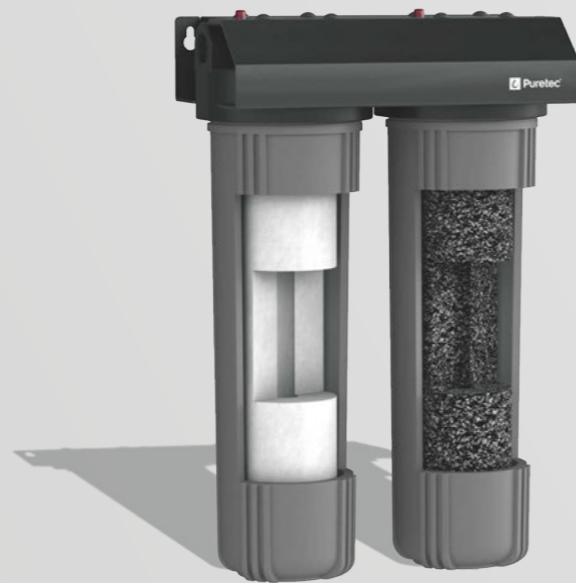
Designed to feed every tap in your house with clean, chlorine free water.

Using the same filtration as the FilterWall-IM2, the WH2 is ideal for customers with existing homes. It's a dual filter system designed to remove the sediment, chlorine, bad taste & odour from your mains water. The WH2 whole house filter is available in 1" & 1.5" connections and 30 to 60 Lpm models.

## SOL SOFTENER

Provides softened, purified water throughout your home.

The SOL Series are WaterMark approved softeners to reduce scaling and spotting through removing limestone, iron, sulphur, magnesium and calcium.



# Rain Water Filtration

Peace of mind knowing your rainwater is pure and safe

## HYBRID G SERIES

*HYBRID G13, THREE-STAGE FILTRATION*

The Hybrid G13 is ideal for homes with mains to rain switch over, incorporating sediment removal filtration & UV protection to ensure rainwater is safe to drink, while also removing the chemicals & chlorine found in mains water

*HYBRID G7, TWO-STAGE FILTRATION*

The G7 is ideal for rainwater applications with its 2-stage filtration and industry leading UV system ensuring sediment is removed and bacteria is killed.

Both models are available in 10 & 20" filtration to suit flow rates up to 130 Lpm, and have washable first stage filters to extend filter life.



## HYBRIDPLUS

*COMPLETE PLUMB & PLAY, WEATHERPROOF FILTRATION*

*Available in a variety of models to suit flow rates up to 86 Lpm.*

The Puretec HybridPlus Series incorporates Radfire™ Ultraviolet Technology, which is completely eco-friendly, chemical-free and kills 99.9% of bacteria including E. coli, Giardia, and Cryptosporidium Cysts. The HybridPlus filtration system is encased in Puretec's patented weatherproof cabinet to protect the system from tampering, rodents, weather and reduces pump noise and is backed with a three year warranty.



Scan the QR code for more information on Mains Water Filtration



Scan the QR code for more information on Rain Water Filtration





# Commercial Solutions

Filtration solutions for apartments, offices & public spaces

## RAINWATER REUSE KITS

Reusing rainwater is an environmentally friendly solution to design into any building from an office block to a sports stadium. Our rainwater reuse kits will treat rainwater on an industrial scale to allow it to be reused in bathrooms and other non drinking applications with Revit files & engineering drawings available to easily include the kits into your project.



## DF SERIES

*State-of-the-Art on Demand Chilling Technology*

The DF Series combines Puretec's Z1, 4-stage filter, with a stylish drinking fountain to provide clean, safe drinking water to commercial & public buildings. Available in 2 models, the DF Series can provide up to 175 cups of chilled water every hour. The Z1 filter has a 30,000 L capacity, ensuring minimal maintenance. The DF Series has a 3 year warranty for peace of mind.



## ULTRA RO

*Dyanmic Flow Reverse Osmosis Technology for Coffee Machines*

The advanced Jetflow technology provides reverse osmosis water treatment with more control, less physical space, and faster water production. A combination of high performance membranes, precision water blending, permeate/reject command, and pressure boosting control whilst monitoring and ensuring optimum water quality.



- 1 **SPARQ S6** Chilled, Sparkling, Boiling
- 2 **Tripla ELITE 20** Straight Neck, 3-Way Mixer Tap
- 3 **ULTRA RO3** Coffee Machine Filtration
- 4 **DF Series** Filtered, Chilled Bubbler
- 5 **Rainwater Reuse** Rainwater Reuse system





# Alternative Water Sources

Whatever your application, we have a solution

## BORE WATER

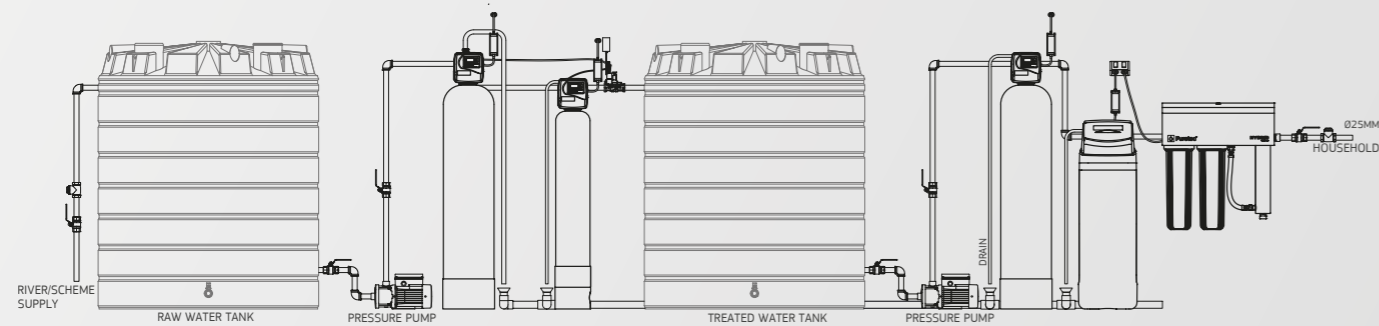
Puretec has a range of filters to help treat bore water and reduce common bore water contaminants including iron, minerals, sediment and bacteria. We recommend taking a water test, sending us the results and we can design a solution for your specific needs.

## RAIN WATER

Puretec has a series of filtration systems ranging from two-stage whole-house filters to three-stage UV filters, removing sediment and killing bacteria to ensure the rainwater is pure and safe for consumption.

## RIVER WATER

River water is full of contaminants that need removing before deeming it safe to drink. The sediment found in river water can damage appliances and block pipes without filtration. Puretec has a range of filtration to protect pipes and to make it safe for drinking. Depending on your needs for river water, Puretec will help you treat it.



Example: River Water Product Solution

# Industrial Filtration Solutions

Customised solutions to resolve your water issues

## Filtration solutions for all industries

If you are building a winery or dairy, water quality & safety is essential to the success of the business. There is no one size fits all solution for any industry, we need to build a package to tackle the water issues in the region.

Whether you need to remove iron from bore water, tannins from river water or remove E. coli to ensure water safety, we can build a solution for you. The first step is to undertake a water test and send us the results. We will then design a filtration solution to meet your aims and provide Revit files, Engineering diagrams and installation drawings to help you design it into your project.

## HOSPITAL



## WINERIES



## STADIUM



## DAIRIES



## OFFICE



## CAFES



Scan the QR code for more information



With more than 30 years in the water filtration industry, Puretec remains a family owned, family run company with an unrivalled reputation for quality, innovation and reliability. We manufacture innovative solutions to achieve the best possible outcome for all your water filtration needs.

Our dedication to manufacturing a wide range of products with seamless backup has ensured our water filtration products are of impeccable quality and are true to our tagline *perfecting water*.

The Puretec range has been designed for the worldwide market from extensive market research and customer feedback. We know uncompromised quality and consistency along with innovation and technology is of utmost importance with water filtration - that's how we've ensured Puretec water is consistent and precise.

## PURETEC AUSTRALIA AND NEW ZEALAND

### Australia

**P: 1300 140 140**

**E: [sales@puretecgroupp.com](mailto:sales@puretecgroupp.com)**

**W: [puretec.com.au](http://puretec.com.au)**

### New Zealand

**P: 0800 130 140**

**E: [sales@puretecgroupp.com](mailto:sales@puretecgroupp.com)**

**W: [puretec.co.nz](http://puretec.co.nz)**



This catalogue renders all previous catalogues invalid. No claims can be made based on the specifications and images in this catalogue. The design, technology, colours, features and prices are subject to change without prior notice. Whilst every endeavour is made to ensure accuracy, no responsibility is taken for any errors or omissions in detail. This catalogue and all its contents are copyright protected. All rights are reserved, particularly alteration, translation and reproduction using electronic systems. Sales of products are subject to our Terms and Conditions which are available upon request. All warranties in this book cover parts for the period stated and cover for labour for the first year where applicable and approved by Puretec. Puretec products and systems must be installed in accordance with instructions and specifications contained within the user guide provided. Micron ratings are nominal. This catalogue contains various filter systems and cartridges designed for different applications. Puretec dealers can provide you with advice to suit your needs. Please call our Customer Care Team at **1300 140 140** AU, **0800 130 140** NZ or email **[sales@puretecgroupp.com](mailto:sales@puretecgroupp.com)**. Copyright © Puretec Pty Ltd 2023.