

AIR PUMPS HOT WATER PUMPS & MORE

LINEAR AIR

HOT WATER BOOSTER

HOT WATER CIRCULATOR

DUAL HOT WATER CIRCULATOR

PUMP SETS





LINEAR AIR PUMP

RB SERIES

The smart, unique mechanical design of the RB series pumps offer numerous benefits. Designed to provide a stable medium flow rate with extremely low energy-consumption rates - an environmentally friendly pump. RB series pumps are equipped with built-in protection devices which reduce maintenance costs, including safety switch and the thermostat to protect pumps from any unpredictable diaphragm breaks and/or an abnormal internal temperature.

APPLICATIONS

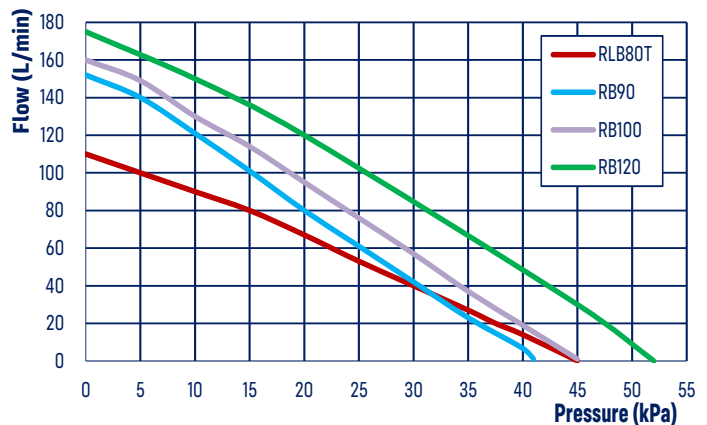
- Wastewater aeration
- Aquaculture
- Pond and aquarium aeration

FEATURES & BENEFITS

- High quality diaphragm
- Inbuilt safety switch - shuts off in event of diaphragm failure; prevents damage to pump
- Low energy consumption at 35% less power consumption than alternate models
- Ultra quiet operation (RLB80T) up to 24% less noise (depending on back-pressure)
- Quick heat dissipation
- Long service life
- High performance, low noise

CONSTRUCTION

- Robust IPX4 cast aluminium construction
- Oil-free design for safety
- Inbuilt thermal overload (trips at 120°C - auto resets when cooled)
- Operational temperatures -10°C to +40°C (ambient)



CODE	MODEL	POWER 240V		OUTLET AIRFLOW	OPTIMUM BACK PRESSURE	MAX PRESSURE	SOUND LEVEL	AMBIENT TEMPERATURE	WEIGHT (KG)	SIZE L x W x H (mm)
		AMPS	P1 (W)							
23600	RLB80T	0.34	58	80 L/min	15kPa	44kPa / 6.39 psi	<41 dBA	-10°C to +40°C	5.4	185x240x175
19238	RB90	0.52	68	90 L/min	18kPa	41kPa / 5.94 psi	46 dBA	-10°C to +40°C	8.8	262x216x223
15742	RB100	0.7	87	100 L/min	18kPa	45kPa / 6.53 psi	48 dBA	-10°C to +40°C	8.8	262x216x228
24164	RB120	1	119	120 L/min	20kPa	52kPa / 7.54 psi	46 dBA	-10°C to +40°C	9.2	262x262x228



AIR DIFFUSERS

RAD SERIES

REEFE Air Diffusers offer superior aeration for wastewater treatment, plants, aquaculture and koi ponds. Multiple diffusers can be mounted in-line for larger systems. The high grade EPDM membrane with precision holes, offers a long lasting solution for your system.

APPLICATIONS

- Wastewater aeration
- Air purification
- Aquaculture
- Septic systems

FEATURES & BENEFITS

- Low maintenance diffuser, saves time cleaning
- RAD models provide very evenly dispersed bubbles, providing excellent aeration

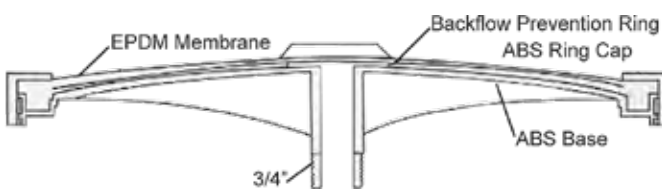
CONSTRUCTION

- High grade EPDM
- ABS support dish



FINE BUBBLE PATTERN FOR MAXIMUM AERATION

DESIGN FEATURES OF RAD255 & RAD325



RWC03

CODE	MODEL	VOLUME	BUBBLE TYPE	DIAMETER (OUTER)	MAX VOLUME	INLET	SIZE OF BUBBLE	OPERATION TEMP. RANGE
15728	RAD130	20 L/min	Fine	130mm	20L/min	¼" BSP	1 - 3 mm	0 + 100°C
6139	RAD255	60 L/min	Fine	255mm	120 L/min	¾" BSP	1 - 3 mm	0 + 100°C
6146	RAD325	80 L/min	Fine	325mm	200 L/min	¾" BSP	1 - 3 mm	0 + 100°C
18279	RADB16	Weighted Base to suit RAD130, RAD255 and RAD325. 5/8" Hose Connection						
27042	RWC03	REEFE Wastewater Treatment Controller STD						

RHC2060 HOT WATER CIRCULATOR PUMP

RHC SERIES



This 3 speed circulating pump is ideal for ring main applications in domestic or commercial systems. Quiet, reliable and low power consumption are just some of the great features of this pump. It comes standard with brass barrel union & a 1.5m plugged cable.

APPLICATIONS

- Hot water circulating
- Commercial or domestic hot water systems
- Air-conditioning cooling systems
- Solar hot water systems
- Hotels & Motels

FEATURES & BENEFITS

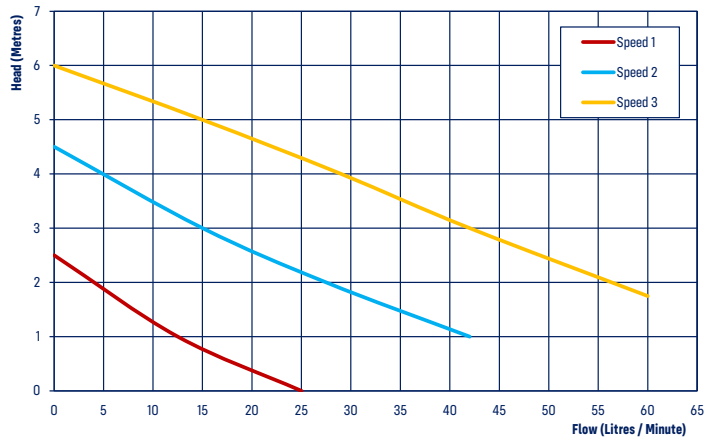
- In line pump casing
- Options for 20mm or 25mm MBSP connections
- 3 speed variable adjustment
- Low power consumption
- Reliable, maintenance free
- Operating pressure 10 bar
- Thermal overload
- Liquid temperature 2°C to 110°C
- Certified to AS/NZS4020 for use with potable water

CONSTRUCTION

- GR 304 Stainless Steel pump casing
- Ceramic motor shaft
- PES composite impellers
- Ceramic bearing & EPDM seals
- 25mm x 20mm brass union set supplied
- Ingress Protection IP44
- Insulation Class H



Adaptors, Unions & O-rings available with pump



NOTE

*This pump must be protected from the weather

CODE	MODEL	SPEED	POWER 240V		HEAD (M)	FLOW (L/MIN)
			AMPS	kW		
7372.SS	RHC2060-S/S	3	0.45	1.0	6	60
		2	0.35	0.70	4.5	42
		1	0.25	0.55	2.5	25

SIZE (L) bare pump	SIZE (L) with barrel union
PORT TO PORT (MM)	LENGTH (MM)
130	185
PORT TO PORT (MM)	UNION (MM)
25 MBSP	20 MBSP



RHC3280 HOT WATER CIRCULATOR PUMP

RHC SERIES

This 3 speed circulating pump is ideal for ring main applications in domestic or commercial systems. Quiet, reliable and low power consumption are just some of the great features of this pump. It comes standard with barrel union.

APPLICATIONS

- Hot water circulating
- Commercial or domestic hot water systems
- Air-conditioning cooling systems
- Solar hot water systems
- Hotels & Motels

FEATURES & BENEFITS

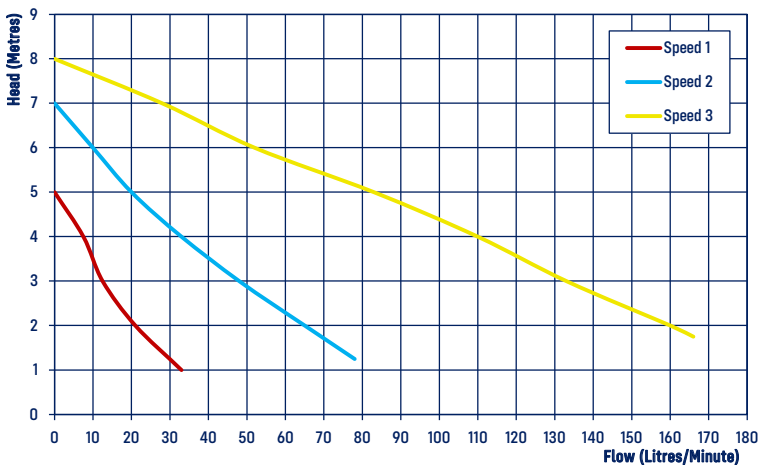
- In line pump casing
- 3 speed variable adjustment
- Low power consumption
- Reliable, maintenance free
- Max operating pressure 10 bar
- Thermal overload
- Liquid temperature 2°C to 110°C
- Max ambient temperature 40°C
- Options for 32mm FBSP or 50mm MBSP connections
- Certified to AS/NZS4020 for use with potable water

CONSTRUCTION

- GR 304 Stainless steel pump casing
- Ceramic motor shaft
- PES composite impellers
- Ceramic bearing & EPDM seals
- Stainless steel barrel unions supplied with pump
- Ingress Protection IP44
- Insulation Class H



Adaptors, Unions & O-rings available with pump



NOTE

*This pump must be protected from the weather

CODE	MODEL	SPEED	POWER 240V		HEAD (M)	FLOW (L/MIN)
			AMPS	WATTS		
18828	RHC3280	3	1.1	245	8.2	166
		2	0.85	190	7	77
		1	0.6	135	5	33

SIZE (L) bare pump	SIZE (L) with barrel union
PORT TO PORT (MM)	LENGTH (MM)
180	230
PORT TO PORT (MM)	UNION (MM)
50 MBSP	32 MBSP

RHB1590 HOT WATER BOOSTER PUMP

RHB SERIES



The RHB1590 is a booster pump designed for boosting water pressure in domestic potable cold and hot water applications. The pump provides additional pressure to showers, taps and similar outlet points. The RHB1590 is designed to automatically boost the flow to an outlet and is activated by an inbuilt flow switch. The pump incorporates a flow switch which starts or stops the pump when a tap is turned on or off.

APPLICATIONS

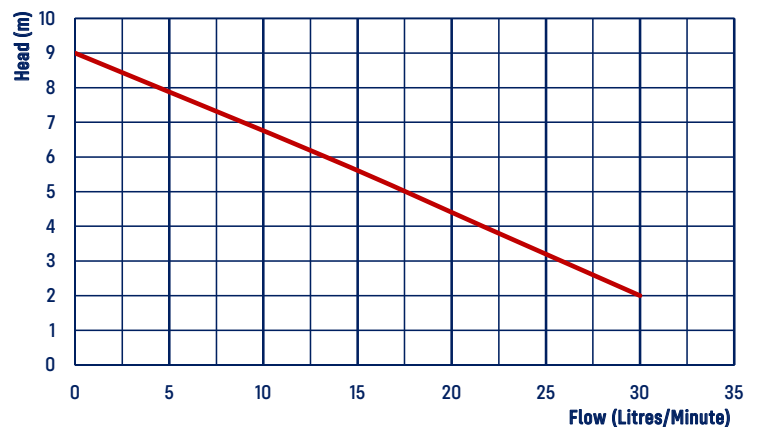
- Hot water boosting
- Commercial or domestic hot water systems
- Air-conditioning cooling systems
- Solar hot water systems
- Hotels & Motels

FEATURES & BENEFITS

- In line pump casing for easy installation
- Options for 20mm or 13mm BSP connections
- Automatic or Manual Operation
- In-built Flow Switch
- Low Power Consumption
- Reliable, Maintenance Free
- Max Mains Pressure 500kPa as per AS 3500.1-2018
- Liquid temperature from 2°C to 65°C
- Ambient temperature up to 40°C
- Certified to AS/NZS4020 for use with potable water
- Quiet operation

CONSTRUCTION

- Stainless Steel Pump Casing
- Ceramic Motor Shaft
- PES Composite Impellers
- Ceramic Bearings
- EPDM Seals
- Ingress Protection IP42
- Insulation Class F



CODE	MODEL	POWER 240V		MAXIMUM				RHB1590 SIZE bare pump	RHB1590 SIZE with barrel union
		AMPS	P1 (kW)	FLOW (L/MIN)	HEAD (M)	LIQUID TEMP	MAINS PRESSURE	LENGTH 160mm	LENGTH 215mm
18811	RHB1590.SS	0.45	1.05	30	9	+2°C - 65°C	500kPa**	PORTS (MM) 20 MBSP	UNION (MM) 15 MBSP

NOTE ** Max Mains Pressure 500kPa as per AS 3500.1-2018



DUAL HOT WATER CIRCULATOR PUMP SET

DELUXE

The REEFE Deluxe Hot/Cold water circulator pump sets can be used in a range of applications including domestic and commercial buildings to save water and time, and cooling and heating of machinery and other processes. Circulator pumps, consisting of a control panel and pumps mounted on a vertical steel frame, are designed to circulate water from a storage tank through a ring-main system and back to the storage tank for reheating.

APPLICATIONS

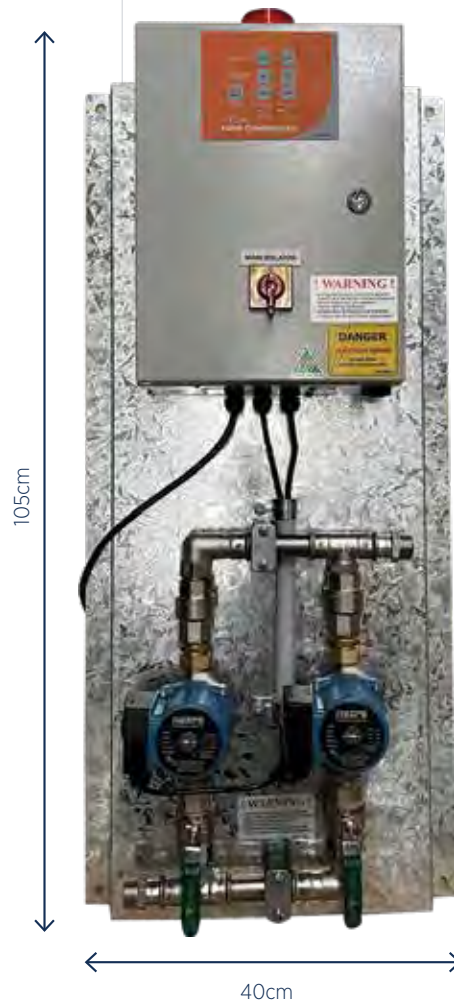
- Commercial and domestic hot water circulating
- Laundries and hospitals
- Hydroponics
- Hotels, motels and aged care facilities
- High rise buildings
- Hot water and cold water circulating

FEATURES & BENEFITS

- Pumps constructed from non corrosive material
- Pre-plumbed and pre-wired ready for installation
- 24-hour/7-day time clock
- Thermostat input
- Easy to use dual pump controller
- Inter-connectable with BMS
- Duty Pump Alternation

CONSTRUCTION

- Heavy duty galvanised wall bracket
- 25mm stainless steel manifolds (RHC2060)
- 25mm valves and unions (RHC2060)
- 32mm stainless steel manifolds (RHC3280)
- 32mm valves and unions (RHC3280)
- All installations must be protected from weather exposure
- Ingress Protection IP65 (control panel), IP44 (pumps)
- All Plumbing Components are WaterMark Approved
- The Circulating Pumps have AS 4020 Certification for Potable Water



NOTE Refer to page 114 for further information on the Deluxe Dual Hot Water Pump Controller

CODE	PUMP MODEL	CONTROL PANEL	DESCRIPTION
12925	RHC2060	Deluxe	REEFE Dual hot water circulating pump system. Comprising of two (2) 240V RHC2060 pumps, deluxe alternating pump controller and stainless steel pump manifolds with valves and fittings mounted on galvanised steel wall brackets
18699	RHC3280	Deluxe	REEFE Dual hot water circulating pump system. Comprising of two (2) 240V RHC3280 pumps, deluxe alternating pump controller and stainless steel pump manifolds with valves and fittings mounted on galvanised steel wall brackets



DUAL HOT WATER CIRCULATOR PUMP SET

STANDARD

The REEFE Standard Hot/Cold water circulator pump sets can be used in a range of applications including domestic and commercial buildings to save water and time, and cooling and heating of machinery and other processes. Circulator pumps, consisting of a control panel and pumps mounted on a vertical steel frame, are designed to circulate water from a storage tank through a ring-main system and back to the storage tank for reheating.

APPLICATIONS

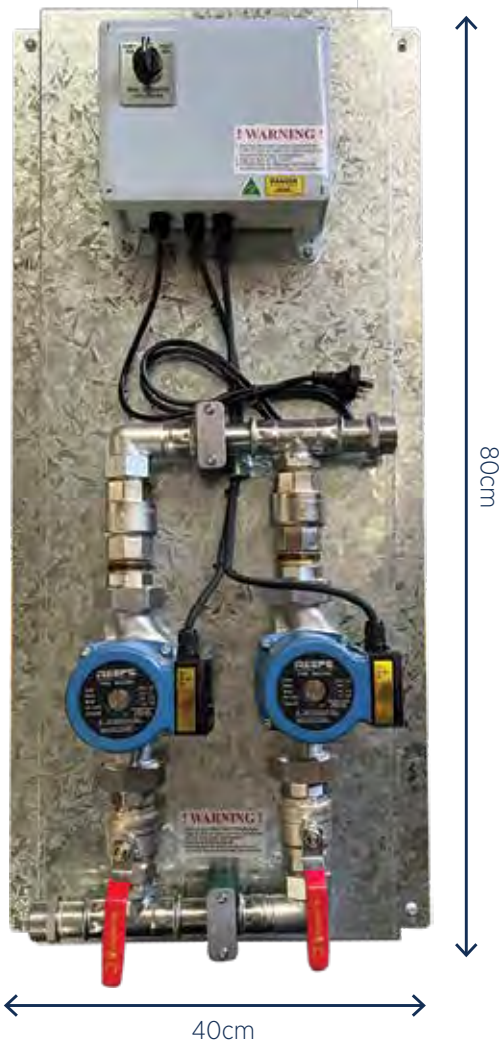
- Domestic and light commercial hot water circulating
- Laundries
- Hydroponics
- Hotels, motels and aged care facilities
- High rise buildings
- Hot water and cold water circulating

FEATURES & BENEFITS

- Pumps constructed from non corrosive material
- Pre-plumbed and pre-wired ready for installation
- 24-hour/7-day time clock
- Easy to use dual pump controller
- No provision for thermostat input
- Duty Pump Alternation

CONSTRUCTION

- Heavy duty galvanised wall bracket
- 25mm stainless steel manifolds (RHC2060)
- 25mm valves and unions (RHC2060)
- 32mm stainless steel manifolds (RHC3280)
- 32mm valves and unions (RHC3280)
- Controller enclosed in weatherproof poly
- All installations must be protected from weather exposure (Ingress Protection IP44)
- All Plumbing Components are WaterMark Approved
- The Circulating Pumps have AS 4020 Certification for Potable Water



NOTE Refer to page 114 for further information on the Economy Dual Hot Water Pump Controller

CODE	PUMP MODEL	CONTROL PANEL	DESCRIPTION
18705	RHC2060	Economy	REEFE Dual hot water circulating pump system. Comprising of two (2) 240V RHC2060 pumps, economy alternating pump controller and stainless steel pump manifolds with valves and fittings mounted on galvanised steel wall brackets
18729	RHC3280	Economy	REEFE Dual hot water circulating pump system. Comprising of two (2) 240V RHC3280 pumps, economy alternating pump controller and stainless steel pump manifolds with valves and fittings mounted on galvanised steel wall brackets